

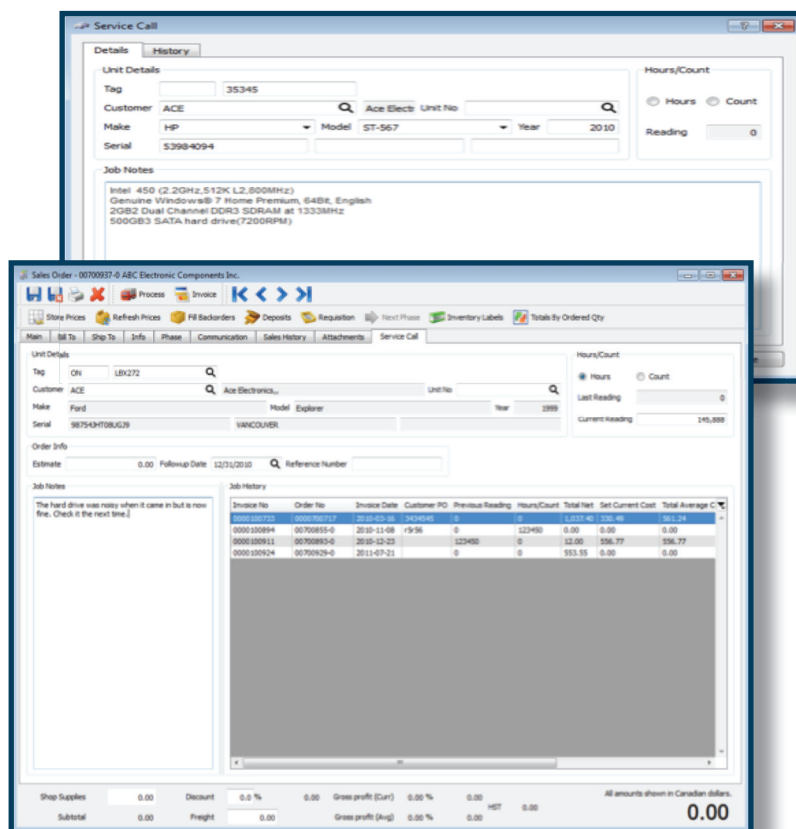


**BVEssentials Service Manager** was designed to help repair industry professionals improve their customer service and increase the efficiency of their business.

BVEssentials runs on Sage BusinessVision, using its architecture and table structure as the foundation for our software. **Service Manager** is an award-winning application that includes many specialized features including: notes, last service, reminders and customer preferences and flexible sorting of parts and labour information. We have also provided special fields to allow easy report and search functions, security settings for different users, work order notes, flexible accounting / invoicing options and comprehensive day-end reporting.

**SERVICE MANAGER INCLUDES  
ALL THE FEATURES OF BOTH  
SALES MANAGER AND  
BVESSENTIALS LIMITED  
EDITION  
PLUS:**

- See item service history onscreen
- Set follow-up dates
- Requisition special order parts
- Look up parts by any word in the description
- Print service history reports
- Create parts/labour packages
- Subtotal by job



*“The Service Manager screen is configurable for any industry.”  
ie. computer, automotive, marine, trucks, office equipment, electronics, etc.*